



ENTRATA ALUNNI

ABBIGLIAMENTO AMMESSO

ENTRATA ALUNNI

**ABBIGLIAMENTO
AMMESSO**

MAGLIETTE E CAMICIE



**sleeveless
shirt**



tank top



T-shirt



V-neck shirt



polo shirt



jersey



**long sleeve
jersey**



sweatshirt



turtleneck



hoody



**Hawaiian
shirt**



dress shirt



tuxedo



**flannel shirt /
plaid shirt**

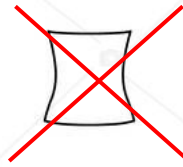


jacket

ENTRATA ALUNNI

ABBIGLIAMENTO
AMMESSO

MAGLIETTE E CAMICIE



tube top



sports bra



tank top



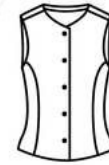
sleeveless shirt



V-neck shirt



T-shirt



princess vest



blouse



shirt



western shirt



military



pin tuck



tuxedo



ruffle front



cossack



smock



peplum



gypsy



sailor



tunic



polo



henley shirt



turtleneck



sweatshirt



sweater / jumper

ENTRATA ALUNNI

ABBIGLIAMENTO
AMMESSO

PANTALONI



straight



skinny



boot-cut



flare



wide leg



pegged



stirrup



5-pocket jeans



bush pants



cargo pants



sailor pants



jodhpurs



hot pants



skort



sweat pants



harem



palazzo



carpenter / overall

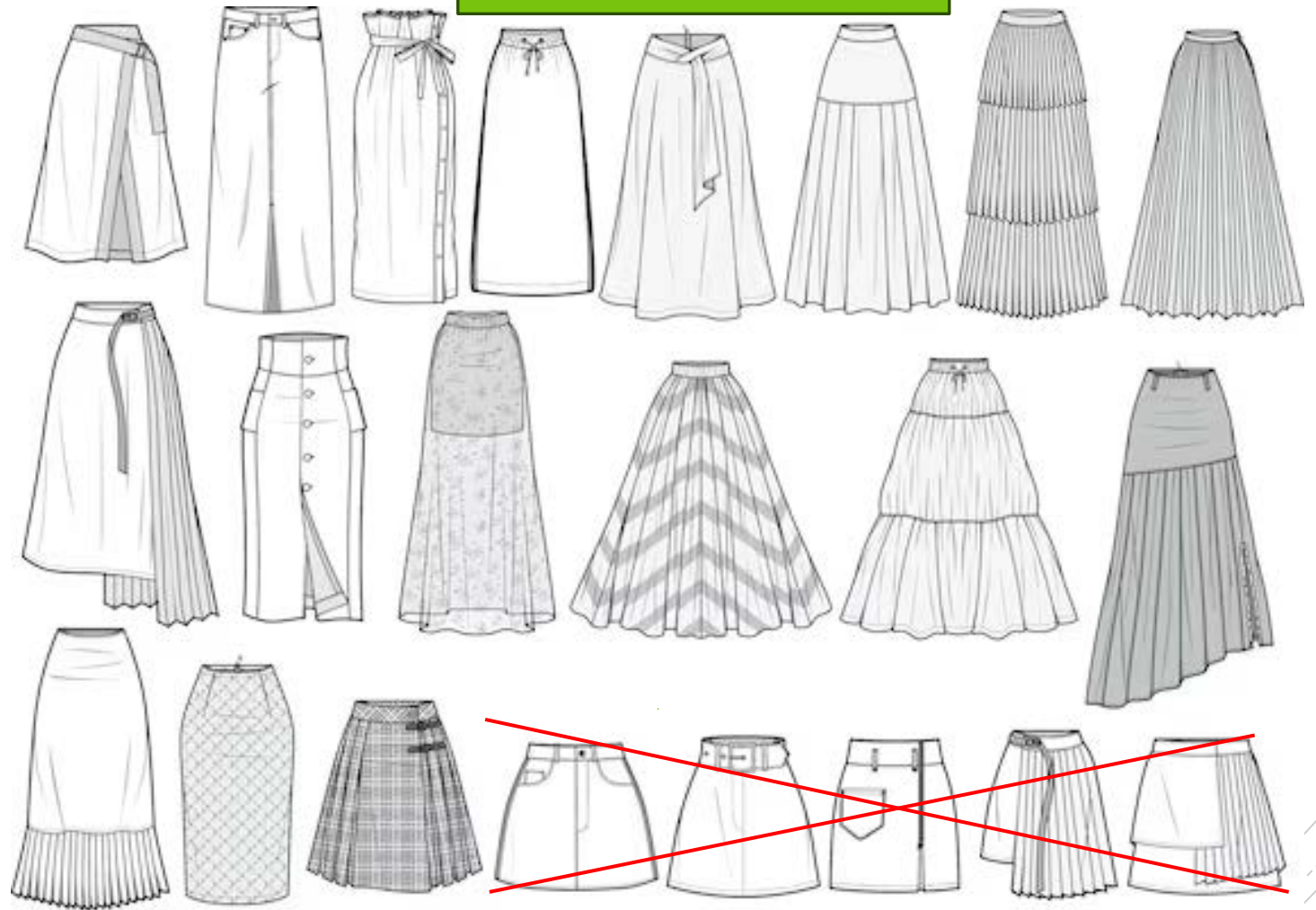


jumpsuit

GONNE

ENTRATA ALUNNI

ABBIGLIAMENTO
AMMESSO



ENTRATA ALUNNI

ABBIGLIAMENTO
AMMESSO

SCARPE



NON
AMMESSO IN
ENTRATA

